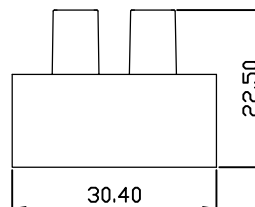
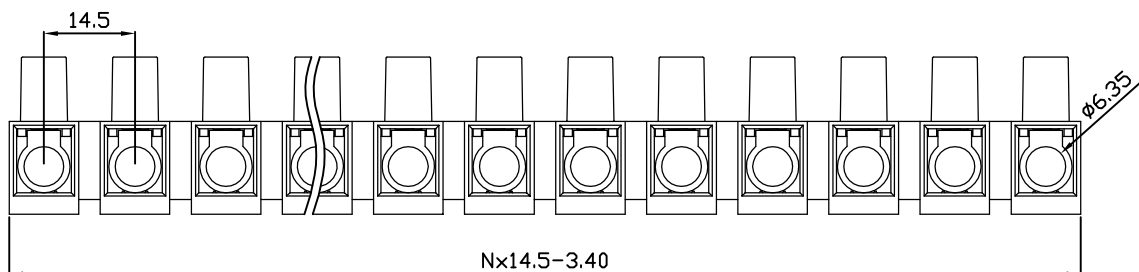
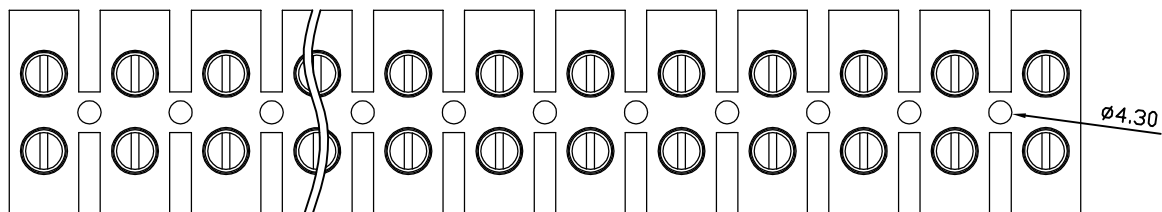


linear dimension(Tolerances Standard GB/T 14486-2008)								—	∕	⊥
variable range	to 6	over 6 to 10	over 10 to 30	over 30 to 60	over 60 to 100	over 100 to 160	over 160 to	to 10	over 10 to 100	over 100 to
tolerance	±0.20	±0.30	±0.50	±0.70	±1.00	±1.30	±1.60	0.10	0.30	0.60



UL/CUL 技术参数		UL/CUL Technical Data		
额定电压	Rated Voltage [V]		600	
额定电流	Rated Current [A]		65	
接线范围	Wire Range		14-6	
单/多芯线	Solid/Stranded [AWG]			
IEC 技术参数		IEC Technical Data		
额定电压	Rated Voltage [V]		750	
额定电流	Rated Current [A]		76	
耐电压	Withstanding Voltage [AWG]		1600V/1Min	
导线截面积	Conductor cross section		6.0-16.0	
硬质/柔性导线	Solid/flexible [mm²]			
材料		Material		
绝缘材料	Insulation Material		PA66	
阻燃等级	Imflammability		UL94V-2	
导体材料	Contactur Material		铜合金 Copper alloy	
导体表面镀层	Contactive Coating		镀镍 Ni Plated	
一般参数		Other Data		
间距	Pitch [mm]		14.50	
极数	Poles [P]		02~12	
螺丝	Screw/扭矩 Torque(Max) [N.m]		M4/1.2	
工作温度	Operating temperatur [°C]		-40~+105	
引针尺寸	Pin Dimensions [mm]		-	
PCB板孔径	PCB Hole Diameter [mm]		-	

DB16H — 14.5 — XXP — C — S/P
 (Series No.) (Pitch) (Poles) Slotted/Phillips
 (Color):GN:(Green), BK:(Black), BU:(Blue), RD:(Red), GY:(Gray)
 OG:(Orange), WT:(White), YL:(Yellow), CR:(Clear)

APPD: J Ting Chen 2023.02.24
 CHKD: Duck Mao 2023.02.24
 DRFT: Steven Lu 2023.02.24

DORABO 宁波地博电气有限公司
 Ningbo Dorabo Electric CO., Ltd

NAME: DB16H-14.5-XXP-C-S

TYPE: CUSTOMER_DRAWING

SIZE: A4

SCALE: 1:1

REV: T0-1

SHEET: 1/1