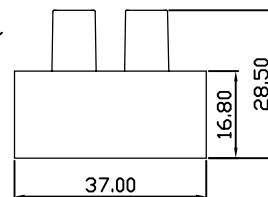
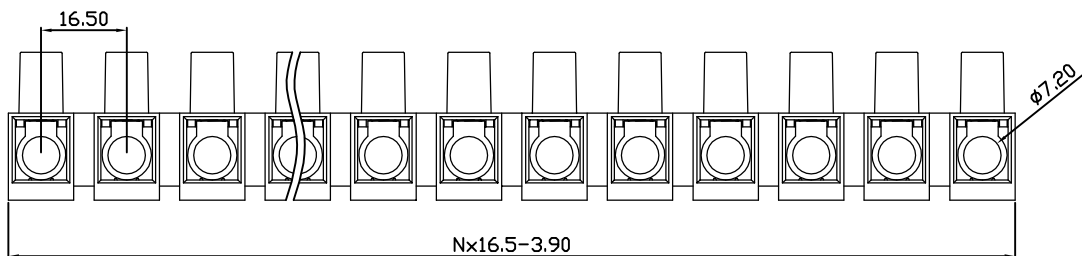
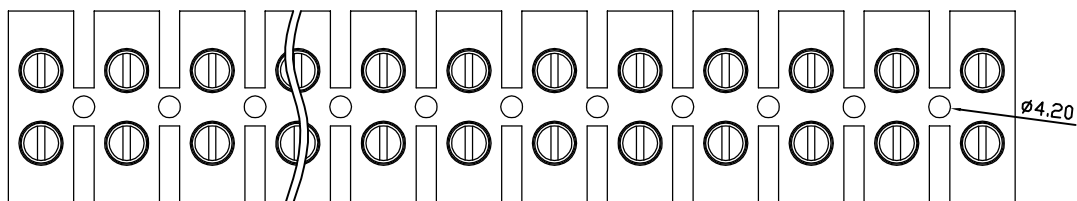


linear dimension(Tolerances Standard GB/T 14486-2008)								—	∕	⊥
variable range	to 6	over 6 to 10	over 10 to 30	over 30 to 60	over 60 to 100	over 100 to 160	over 160 to	to 10	over 10 to 100	over 100 to
tolerance	±0.20	±0.30	±0.50	±0.70	±1.00	±1.30	±1.60	0.10	0.30	0.60



DB18H — 16.5 — XXP — C — S/P

(Series No.) (Pitch) (Poles)

(Color):GN:(Green), BK:(Black), BU:(Blue), RD:(Red), GY:(Gray)
OG:(Orange), WT:(White), YL:(Yellow), CR:(Clear)

Slotted/Phillips

APPD:	JTing Chen	2023.02.23
CHKD:	Duck Mao	2023.02.23
DRFT:	Steven Lu	2023.02.23

DORABO 宁波地博电气有限公司 Ningbo Dorabo Electric CO., Ltd				
NAME: DB18H-16.5-XXP-C-S				
⊕	◁	SIZE: A4	mm (inch)	REV
TYPE: CUSTOMER_DRAWING		SCALE: 1:1	SHEET	T0-1 1/1

UL/CUL 技术参数		UL/CUL Technical Data		
额定电压	Rated Voltage [V]			300
额定电流	Rated Current [A]			85
接线范围	Wire Range			16-4
单/多芯线	Solid/Stranded [AWG]			
IEC 技术参数		IEC Technical Data		
额定电压	Rated Voltage [V]			750
额定电流	Rated Current [A]			101
耐电压	Withstanding Voltage [AWG]			1600V/1Min
导线截面积	Conductor cross section			6.0-25.0
硬质/柔性导线	Solid/flexible [mm ²]			
材料		Material		
绝缘材料	Insulation Material			PA66
阻燃等级	Imflammability			UL94V-2
导体材料	Contacto Material			铜合金 Copper alloy
导体表面镀层	Contactive Coating			镀镍 Ni Plated
一般参数		Other Data		
间距	Pitch [mm]			16.50
极数	Poles [P]			02~12
螺丝	Screw/扭矩 Torque(Max) [N.m]			M5/2.0
工作温度	Operating temperatur [°C]			-40~+105
引针尺寸	Pin Dimensions [mm]			-
PCB板孔径	PCB Hole Diameter [mm]			-