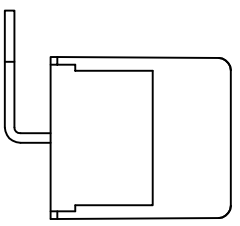
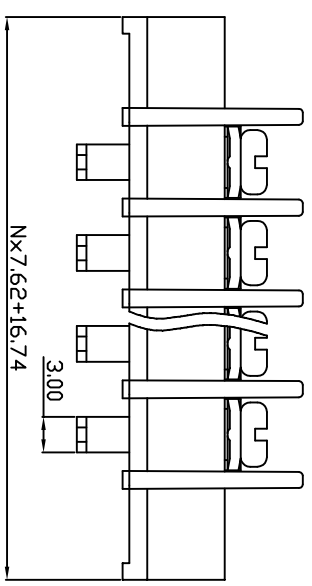
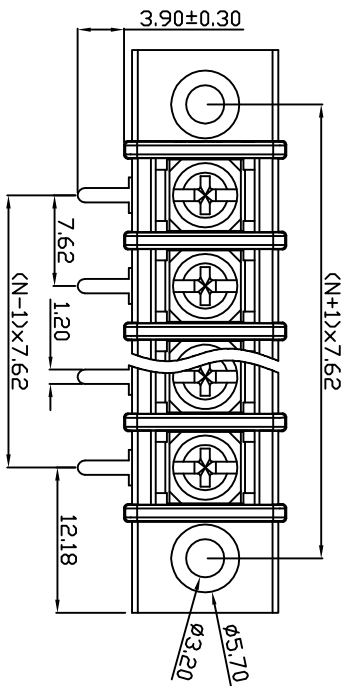
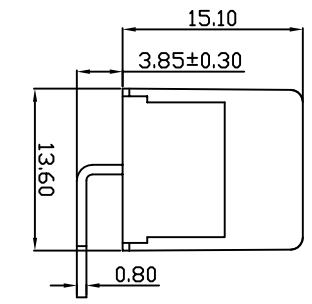
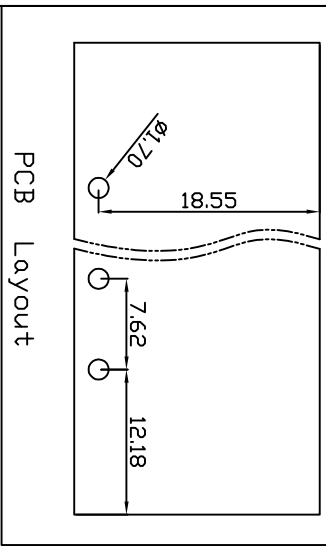


linear dimension (Tolerances Standard GB/T 14486-2008)		—		□		└	
variable range	6 to 6	over 10 to 10	over 30 to 30	over 60 to 60	over 100 to 100	over 160 to 160	over 10 to 10
tolerance	±0.20	±0.30	±0.50	±0.70	±1.00	±1.30	±1.60
							0.10
							0.30
							0.60



UL/CUL 技术参数	cRU us			
UL/CUL Technical Data				
等级 Use Group	B	C	D	
额定电压 Rated Voltage [V]	300	-	-	
额定电流 Rated Current [A]	15	-	-	
接线范围 Wire Range				
单/多芯线 Solid/Stranded [AWG]	22-14			

IEC 技术参数
IEC Technical Data

额定电压 Rated Voltage [V] 250

额定电流 Rated Current [A] 24

耐电压 Withstanding Voltage [AWG] 2000V/1Min

导线截面积 Conductor cross section 2.5

硬质/柔性导线 Solid/flexible [mm²]

材料 Material PA66

绝缘材料 Insulation Material UL94V-0

阻燃等级 Inflammability M30/0.5

导体材料 Conductor Material 镀合金 Copper alloy

导体表面镀层 Contactive Coating 镀锡 Sn Plated

一般参数 Other Data

间距 Pitch [mm]	7.62
极数 Poles [P]	02-24
螺丝 Screw/扭矩 Torque(Max) [N.m]	M3.0/0.5
工作温度 Operating temperatur [°C]	-40~+105
引脚尺寸 Pin Dimensions [mm]	0.80x1.20
PCB板孔径 PCB Hole Diameter [mm]	1.70

DBT30RM — 7.62 — XXP — C — S/P
(Series No.) (Pitch) (Poles) Slotted/Phillips

(Color):GN:(Green), BK:(Black), BU:(Blue), RD:(Red), GY:(Gray)
OG:(Orange), WT:(White), YL:(Yellow), CR:(Clear)

DORABO
宁波地博电气有限公司
Ningbo Dorabo Electric CO., Ltd

NAME: DBT30RM-7.62-XXP-C-P

APPD: JTING Chen	2022.11.26
CHKD: Duck Moo	2022.11.26
DFT: Steven Lu	2022.11.26

TYPE: CUSTOMER_DRAWING	SCALE: 1:1	SHEET 1/1
------------------------	------------	-----------